

# WDS Components Help Desk

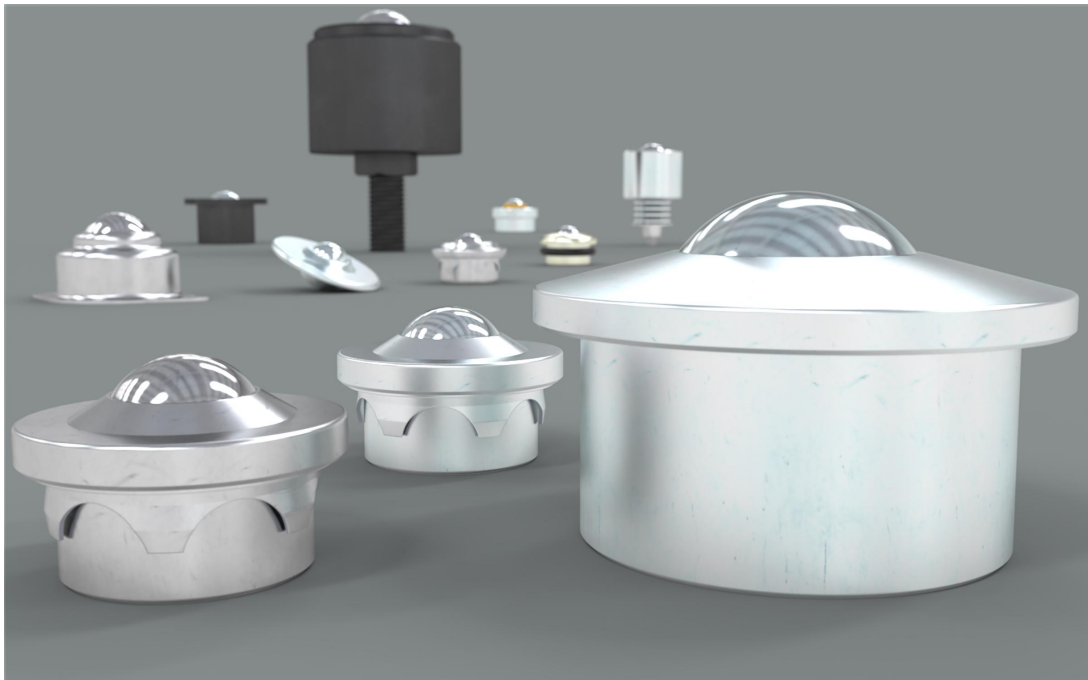
News > News and Media > [Medium Duty Models Added To Ball Transfer Unit Range](#)

---

## Medium Duty Models Added To Ball Transfer Unit Range

2022-11-09 - Mark Moody - Sales and Marketing Director - News and Media

We have extended our range of ball transfer units with a new range of medium duty models. Used on conveyor systems, our new units are machined rather than pressed, enabling them to support and move heavier loads weighing up to 350kg. Commonly referred to as Euro style, the designs are available in stainless as well as carbon steel, making them highly durable and resistant to corrosion, enabling long-life use.



With omnidirectional movement, ball transfer units comprise a recessed ball, surrounded by ball bearings and an outer bearing race, mounted within a housing. Positioned in rows, the rotation of the recessed balls enable the easy movement of payloads travelling across them, and the units are commonly used in conveyor systems including transfer tables. As such, they can be used in manufacturing processes, as well as warehouse packaging and materials handling, through to airport baggage handling systems.

### **Machine Cutting Process Retains Strength And Rigidity**

The new medium duty range of ball transfer units is manufactured by a machine cutting process that retains strength and rigidity, enabling the units to transport higher weight loads. Versions include a carbon steel and zinc plated body with a Steel 9Cr18Mo ball, and the units can also operate in climates from -20°C to +60°C. A model with a 304 stainless

steel body and ball also adds protection in moisture-prone environments or when facing exposure to more aggressive chemicals.

The new ball transfer units also extend the range of diameters to achieve more flexible conveyor system builds, from 31mm up to 54mm. The units are also low profile, starting from a height of just 21mm up to a maximum of 36.5mm.



The medium duty range extends our existing light duty ball transfer units that are available in a variety of styles, sizes, materials, and mounting options. We also supply heavy duty versions with a load capacity up to 2,000kg. For flexible conveyor design requirements, our range of ball transfer units includes surface mount options with bolt-down rollers for secure fastening to flat surfaces. For low profile design requirements, recessed-mount ball transfer units fit into pre-defined holes. Meanwhile, spring-loaded ball transfer units provide shock resistance for higher loads.

Full details of the new medium duty range of ball transfer units, under product code WDS569, can be found on [wdscomponents.com](http://wdscomponents.com). Free CAD images download in a variety of formats are available online, as well as full specification, to enable fast and simple design integration.

### **More information**

Struggling to choose a product? **Contact our Technical Team on 0333 043 5443** or drop us a message using our online contact form and we'll be more than happy to assist you.